



# **The Performance Management Exchange**

Thursday November 24th 2016

**The Hockey Hall of Fame**

# The Future of SAP EPM - Where It's Headed and How to Prepare



**Pras Chatterjee**

*Senior Director Product  
SAP Global*

# SAP EPM Roadmap: Where it's Headed and How to Prepare

Pras Chatterjee, SAP EPM Product Marketing  
November

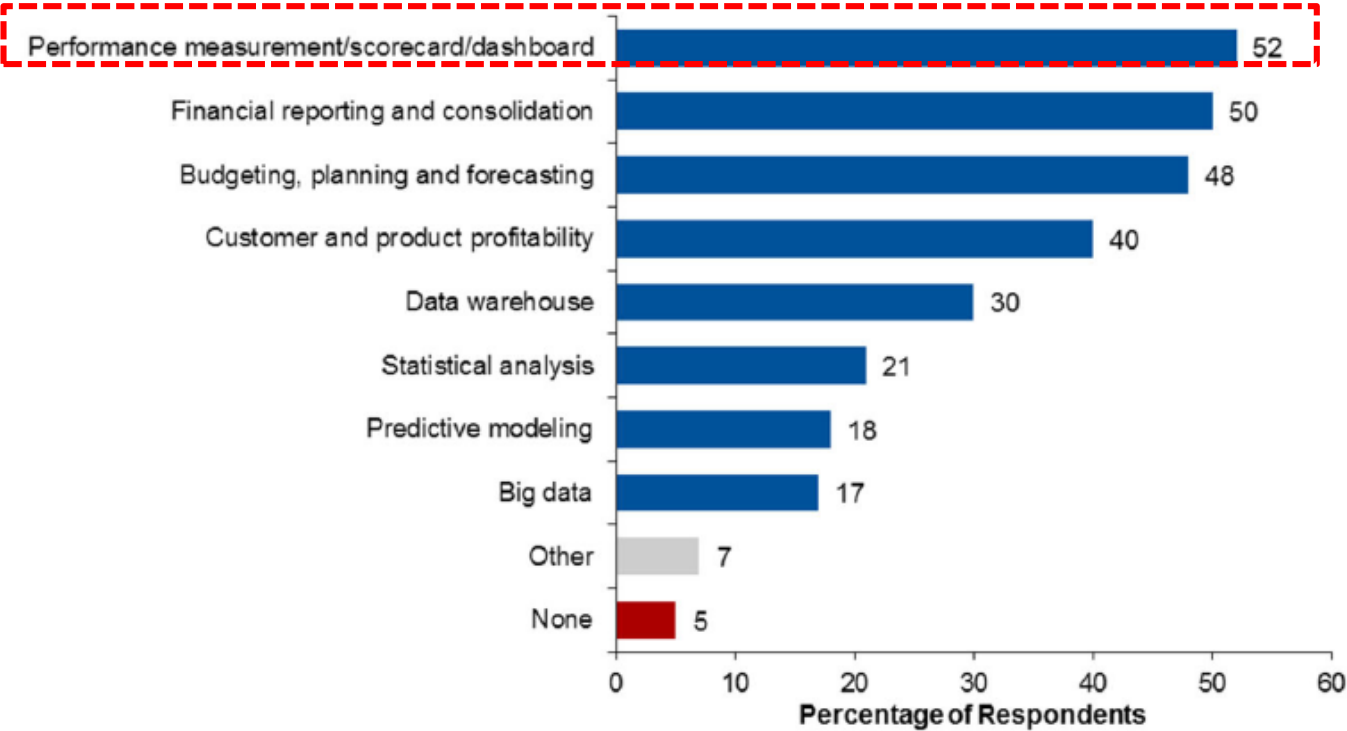




# Introduction

# In fact, performance management investments are the highest analytics priority for Finance

Figure 17. Business Analytics That Need Updating

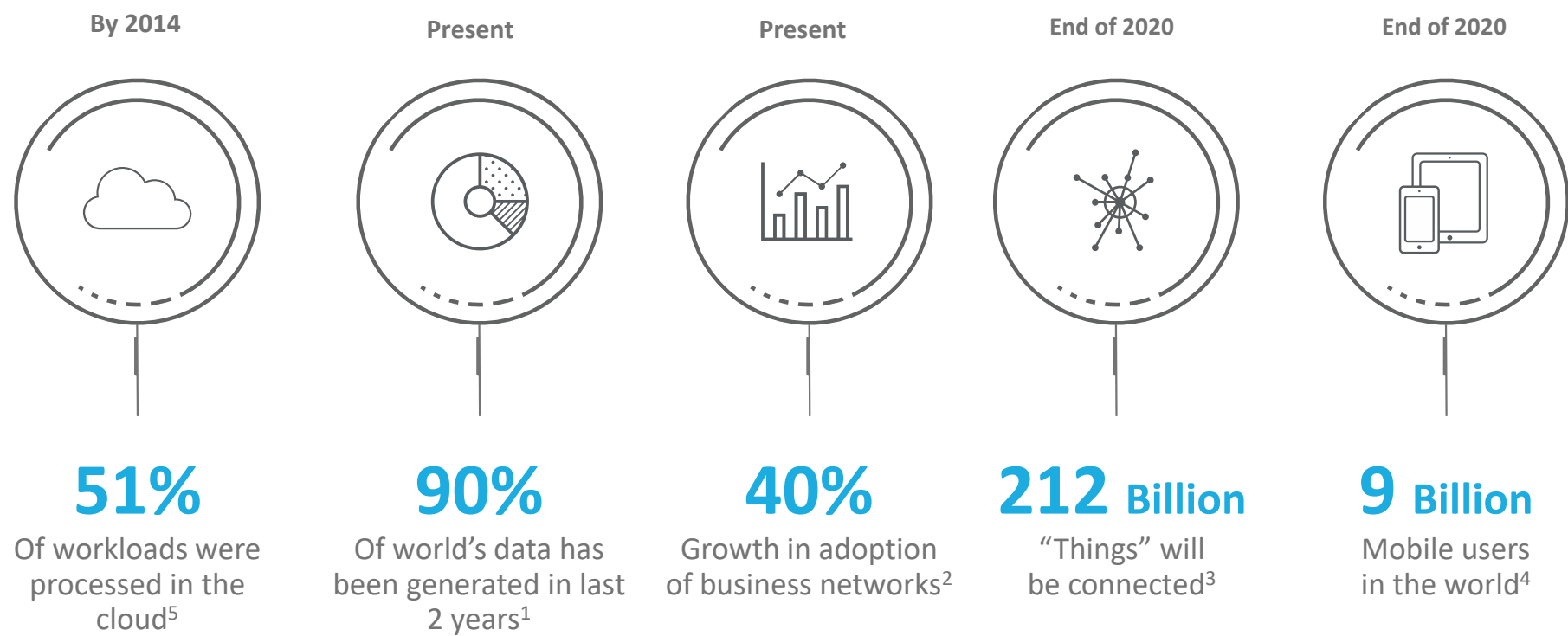


**Survey Question:**  
Which of these business analytics technologies is your organization currently upgrading or enhancing?

Source: Gartner (August 2015)

Source: Gartner. John Van Decker. Survey Analysis: Critical CFO Technology Needs from the 2015 Gartner FEI Study. August 2015.

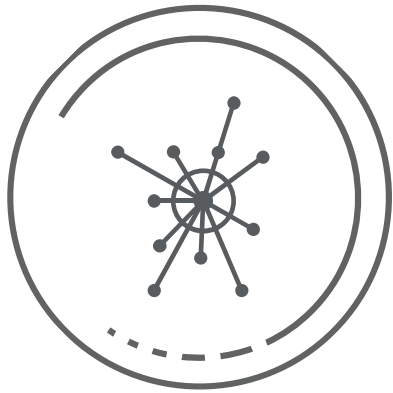
# The level of investment is increasing as the world goes Digital



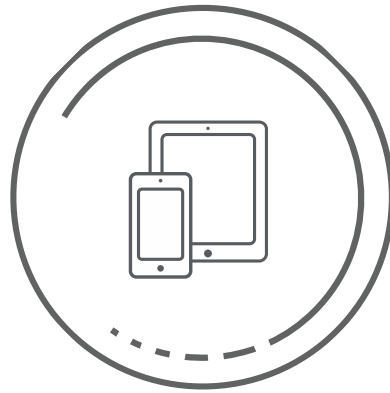
1 ScienceDaily, May 22, 2015 | 2 Technology Adoption Report on Business Networks, Ardent Partners  
3 Internet of Things (IoT) 2013 to 2020 Market Forecast: Billions of Things, Trillions of Dollars, IDC | 4 Statista  
5 Cisco Global Cloud Index: Forecast and Methodology for 2013–2018, Cisco Systems Inc.

# And Digital Business requires.....

---



Reimagining new  
business models



Live insight  
into the business

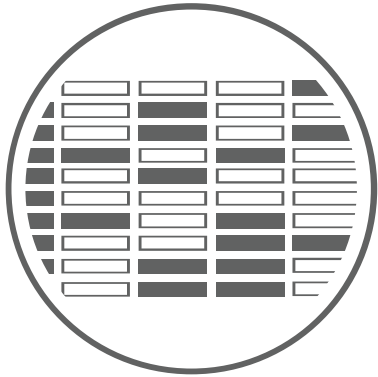


Simplified consolidation and  
reporting

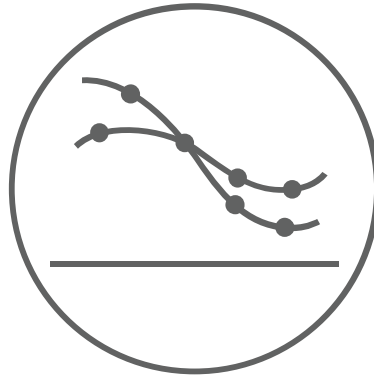
# Reimagine business performance

## with SAP BusinessObjects EPM

---



Plan and simulate in the moment



Be the engine of insight



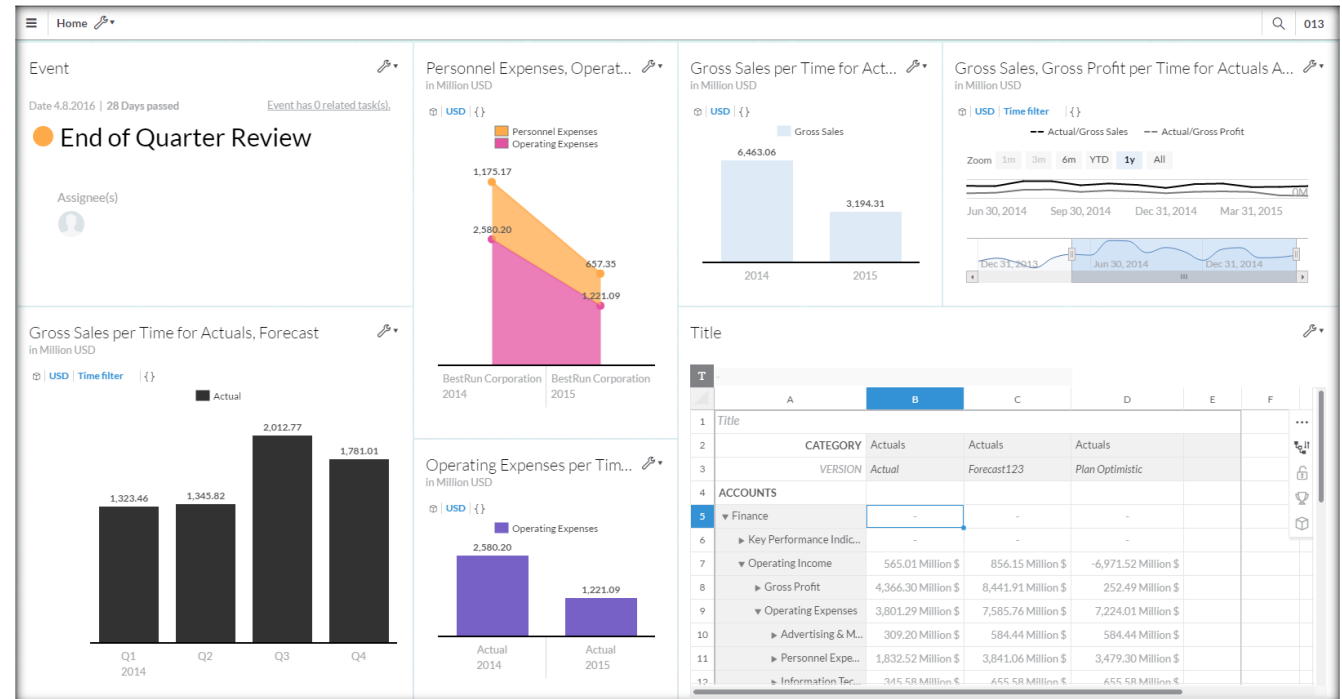
Continuously account

# Plan and simulate in the moment

Explore strategic alternatives and dynamically update plans to seize new opportunities

Collaborate in context for better alignment and accountability

Get the flexibility of standalone spreadsheets without the errors and manual work

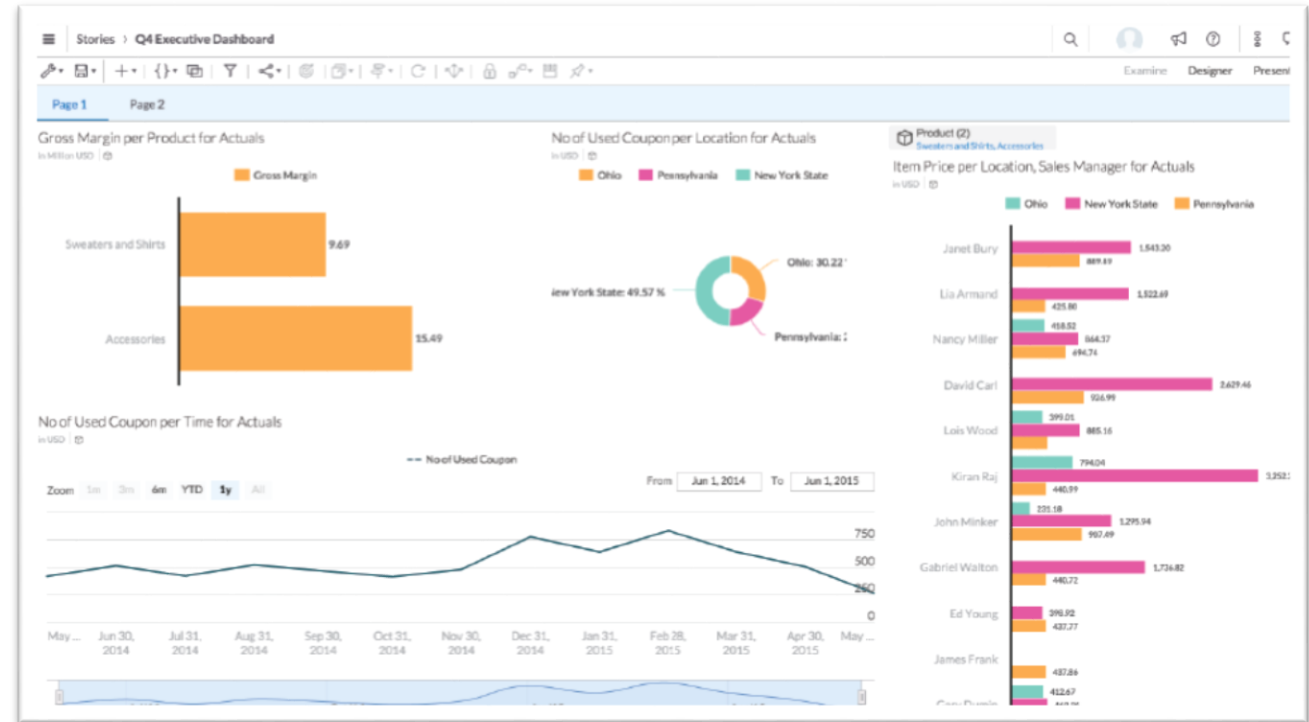


# Be the engine of insight

Provide the business with live insight into what's happening to make better decisions

Discover what's profitable and what isn't to improve the bottom line

Match investments with the areas of highest value to drive growth



# Continuously account

Automate consolidation and reporting to close faster with fewer errors

Report live versus waiting for period-end to act sooner and improve results

Provide real time visibility for compliance and control

23 BS BY AUDIT ID (US layout) - Microsoft Excel

Home Insert Page Layout Formulas Data Review View Add-Ins UBmatrix TP Planning TP Configuration EPM Data Manager PDF-XChange 4 SAP ERP client for E-Bilanz Analysis Team

EPM Context

Key Date: Current Date AUDITID: Contribution Total CATEGORY: Actual CONSOSCOPE: All Segments CURRENCY: United States Dollar ENTITY: BestRun Corporation

Statement of Financial Position

ACTUAL - Actual  
December 2014  
CORPORATE - Corporate  
CONSO - Consolidation  
EUR

	INPUT	Local Adjustments	Total Local / Translated	Automatic Proportion adjust	Proportionat ed	Elim. of subsidiaries' capital and share	Intercompany Elim.	Internal Dividends Elim.	Booking of goodwill and maintain purchase	Eliminations Total	Contribution Total
A2610 - Cash on hand	24,296,025	11,853	24,307,878	(5,270,047)	19,037,831			0		0	19,037,831
A2620 - Short-term deposits and other cash equivalents	20,530,392		20,530,392	(10,437,345)	10,153,047						10,153,047
<b>A2691 - Cash and cash equivalents</b>	<b>44,886,417</b>	<b>11,853</b>	<b>44,898,270</b>	<b>(15,707,392)</b>	<b>29,190,878</b>			<b>0</b>		<b>0</b>	<b>29,190,878</b>
A2210 - Trade receivables, Gross	26,436,573		26,436,573	(7,524,480)	18,912,093		(18,945)			(18,945)	18,953,148
A2212 - Trade receivables, Allowance for bad/doubtful debts	(767,255)	0	(767,255)	120,714	(646,541)						(646,541)
A2220 - Receivables on disposal of PPE, Current, Gross	491,465		491,465	(7,101)	484,364		(533)			(533)	483,771
A2221 - Receivables on disposal of intangible assets, C, Gross	12,893		12,893	(4,734)	8,159						8,159
A2222 - Receivables on disposal of inv. in subsidiaries, C, Gross	3,223		3,223	(1,163)	2,040						2,040
A2224 - Receivables on disposal of inv. in other entities, C, Gross	9,670		9,670	(3,550)	6,119						6,119
A2230 - Dividends receivable	12,893		12,893	(4,734)	8,159						8,159
A2240 - Other receivables, Current, Gross	445,010	0	445,010	(94,577)	350,333		(1,385)			(1,385)	348,948
A2250 - Other receivables, Current, Gross	109,592		109,592	(40,228)	69,364		(35,329)			(35,329)	34,035

# SAP S/4HANA Finance: supporting live business now

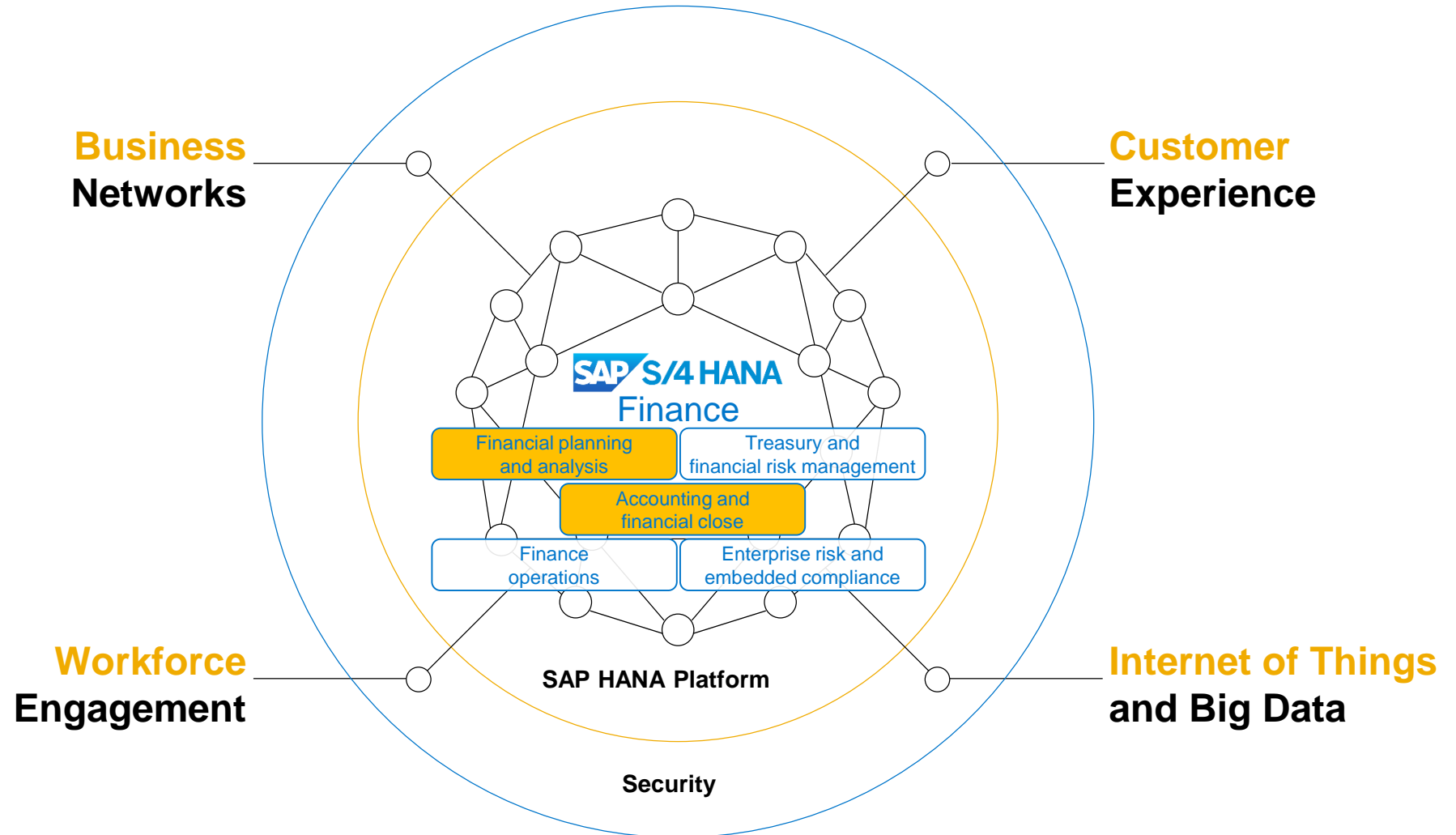
Shape new business models  
for growth

Collaborate and connect the  
“live” business

Be an engine of insight

Manage risks and help  
ensure compliance

Optimize and automate





# Overview of alternative deployment options

# SAP Solutions for Planning

## SAP BusinessObjects Cloud for planning

- Financial Planning and Analysis in the Cloud
- Modern, consumer-app look and feel
- In-context analytics and social collaboration
- High performance, real-time platform

## SAP BusinessObjects Planning and Consolidation, version for SAP NetWeaver

- Unified Planning and Consolidation
- Built on SAP BW and can be powered by SAP HANA
- Available on-premise or on SAP HANA Enterprise Cloud
- Integration with SAP ERP as part of SAP S/4HANA

## SAP BusinessObjects Planning and Consolidation, version for the Microsoft platform

- Unified Planning and Consolidation
- Built on Microsoft SQL Server platform
- Available on-premise\*
- Client profile is often non-SAP install base\*\*



\*can be hosted

\*\*also used by some core SAP customers

# SAP Financial Planning Deployment Options

Alternative Planning Options	Prerequisites/Restrictions	Corresponding Planning Solution
SAP BusinessObjects Planning and Consolidation Standard Model	Any supported release and database	SAP BPC NW or SAP BPC MS. Available on-premise or via managed (private) cloud on HEC.
SAP BusinessObjects Planning and Consolidation <b>Embedded Model</b>	SAP BPC 10.1, SAP NetWeaver 7.4, and SAP HANA as underlying database	SAP BPC NW. Available on-premise or via managed (private) cloud on HEC.
<b>SAP BusinessObjects Planning and Consolidation optimized for SAP S/4HANA</b> (formerly IBPf)	SAP S/4HANA (ERP on HANA with SAP Accounting)	SAP BPC NW. Available on-premise or via managed (private) cloud on HEC.
<b>SAP BusinessObjects Cloud for planning</b>	No prerequisites	SAP BusinessObjects Cloud for planning. (Public cloud on HCP)

All BPC. Choice is dependent on specific use case to be addressed.

\*SAP BPC is SAP BusinessObjects Planning and Consolidation

# SAP Business Planning and Consolidation, version for SAP NetWeaver



# SAP BusinessObjects Planning and Consolidation, version for SAP NetWeaver

Streamlined planning and a faster, more compliant close

## Agile

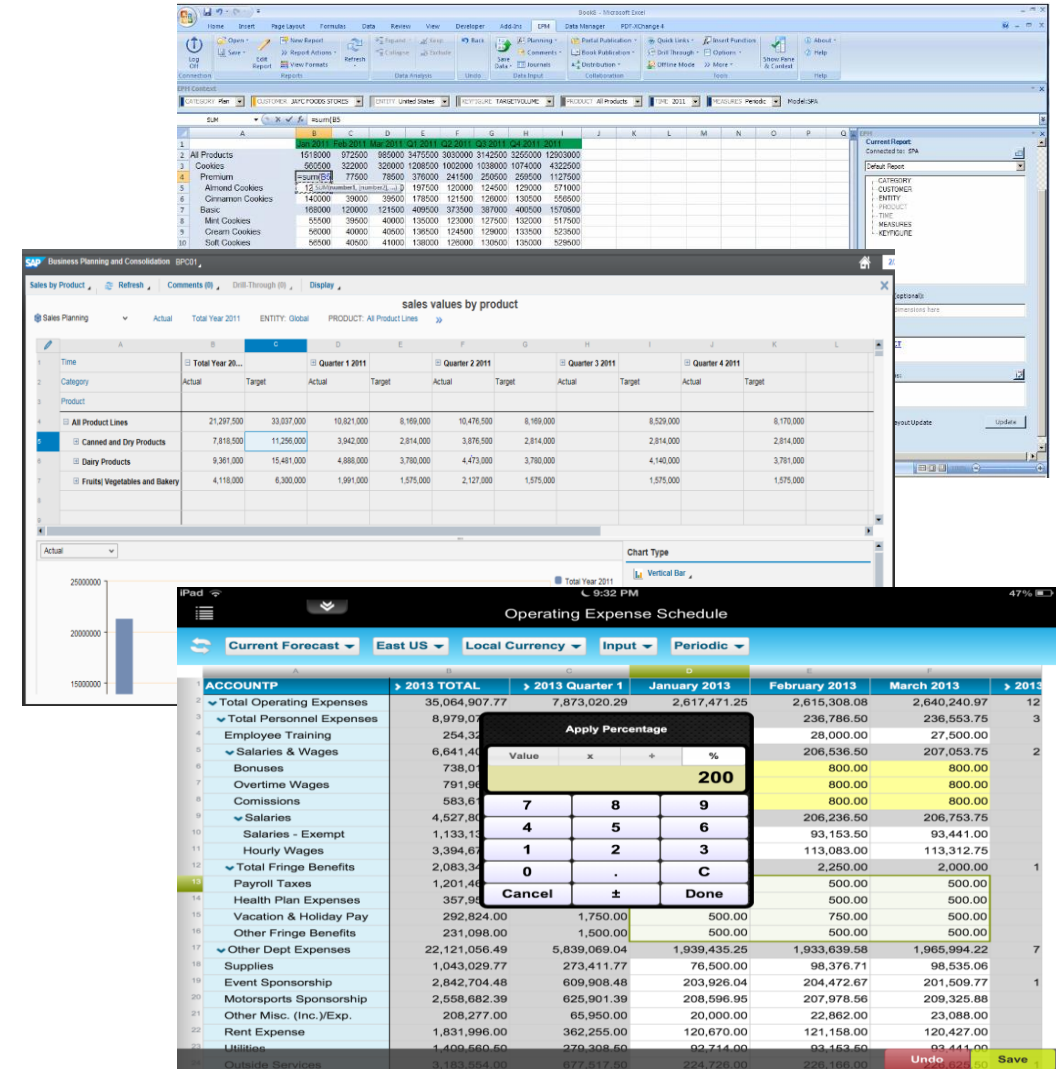
- Engage across Finance and beyond with Microsoft Excel, HTML5 and mobile interfaces
- Rapidly deploy a best practice solution with packaged industry and functional content
- Reduce implementation time and costs leveraging the HANA Enterprise Cloud and subscription pricing

## Accurate

- Achieve better results by quickly identifying true business drivers and planning accordingly
- Increase forecast accuracy leveraging embedded predictive capabilities of SAP HANA
- Plan at any level of detail and shrink consolidated financial reporting time leveraging the SAP HANA real-time platform

## Unified

- Save time and reduce errors with a single, integrated solution for planning and consolidations
- Lower cost of ownership and reduce data duplication with ability to leverage existing BW data warehouse objects
- Improve consistency with direct access to master data and actuals in SAP Business Suite powered by SAP HANA



# SAP BusinessObjects Planning and Consolidation 10.1

## Version for SAP NetWeaver

### Complete feature support on both standard and embedded model

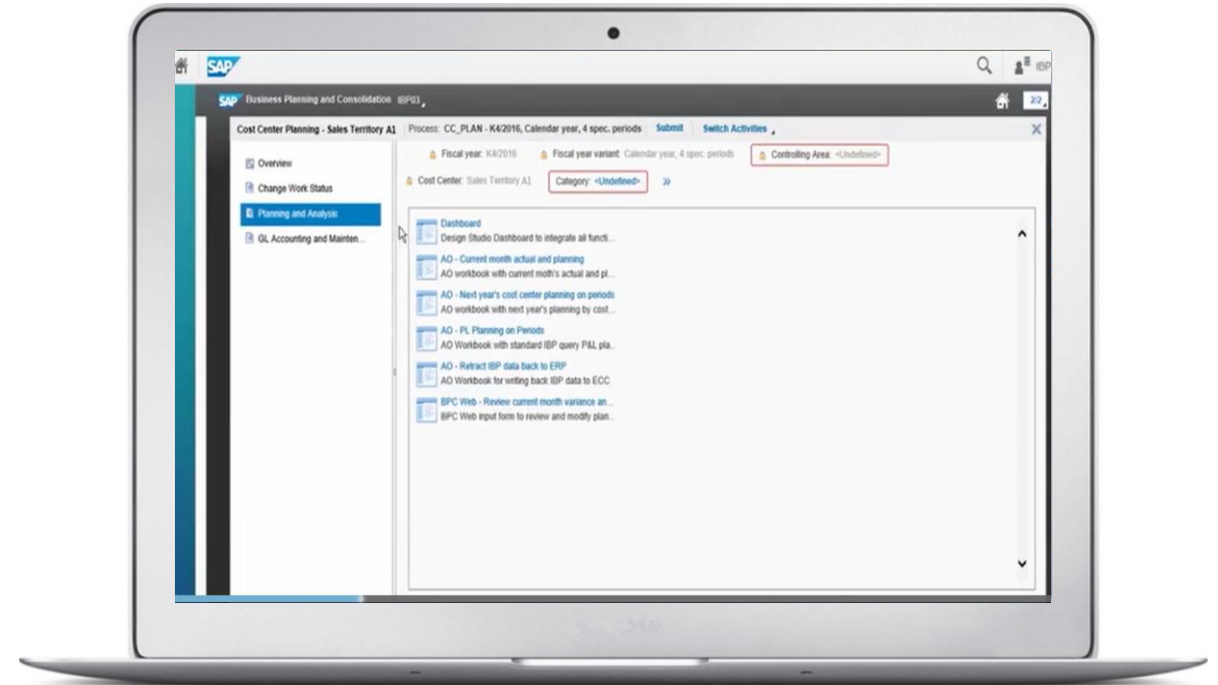
- Consolidation capabilities with embedded model
- Local administration to offer greater line-of-business flexibility
- Real-time data access
- Financial planning embedded into SAP S/4HANA, allowing live integration to business transactions

### Advanced collaboration

- Enhancements to business process flows and work status

### Lower cost of ownership

- Predelivered financial planning content with SAP BusinessObjects Planning and Consolidation optimized for SAP S/4HANA
- Deploy with the SAP HANA Enterprise Cloud service with subscription pricing to get up and running faster with lower up-front costs



**Solution today**

# SAP BusinessObjects Planning and Consolidation, version for SAP NetWeaver – standard and embedded model

## Scope

### Digital transformation

- Support for SAP BW/4HANA
- Dashboard
- Integration with predictive analytics

### UX simplification and personalization

- Transformed user experience
- New home page
- UX improvement on business process flow runtime

### Consolidation

- Push consolidation engine to SAP HANA
- Push control logic to SAP HANA
- Advancement consolidation monitor
- Advanced journal
- COI and IPI/IPA
- 

### Collaboration

- Business process flow integration with Excel client

## Key benefits

- Support for next-generation SAP BW/4HANA
- Improved dashboard capability through integration with SAP BusinessObjects Lumira and SAP BusinessObjects Design Studio
- More accurate planning with user-friendly predictive capabilities using the predictive analysis library in SAP HANA
- Continuous improvement of user experience with SAP Fiori UX
- Fresh new home page design allowing personalization and quick access to frequent used features
- Optimized “My activities” user experience to better suit business need
- Further improvement on consolidation performance by pushing consolidation calculation logic to SAP HANA DB
- Enhancement control capability and performance by reusing SAP HANA rules framework
- Flexible consolidation monitor including tasks, work status, controls, and calculations
- Multiple journal templates, advanced journal settings and validation, journal upload
- Consolidation of investment, intercompany profit elimination of inventory/asset
- Dedicated business process flow pane in Excel client to improve efficiency for business user

## Planned innovations

# SAP BusinessObjects Planning and Consolidation, version for SAP NetWeaver – embedded model

## Scope

### Line-of-business flexibility

- Model planning function in Web client
- Planning function with business process flow and Web reporting
- Navigation attribute support
- Support for SAP BusinessObjects Analysis for Microsoft Office workbook from SAP BusinessObjects Enterprise

### Collaboration

- Advanced comment

### UX simplification and personalization

- Query-less reporting

### Consolidation

- Real-time consolidation
- Matrix consolidation
- Various enhancements

## Key benefits

- Business user enabled to create planning functions/sequences with simplified user experience
- Powerful planning capability enabled in Web client
- Full support for navigation attribute in business process flow and data access profile
- Better integration with business intelligence (BI) platform, support SAP BusinessObjects Analysis for Microsoft Office workbook from SAP BusinessObjects Enterprise in business process flows
- Full commentary capabilities, enhancing complex planning processes
- Enable business user to create ad-hoc reports(input forms) without IT involvement
- Continuous improvement for consolidation with SAP S/4HANA
- Matrix consolidation capability provided by introducing U.S. elimination rule
- Better compounding support, flexible hierarchy support in business rule, transport
- Multiple journal templates, advanced journal settings and validation, journal upload

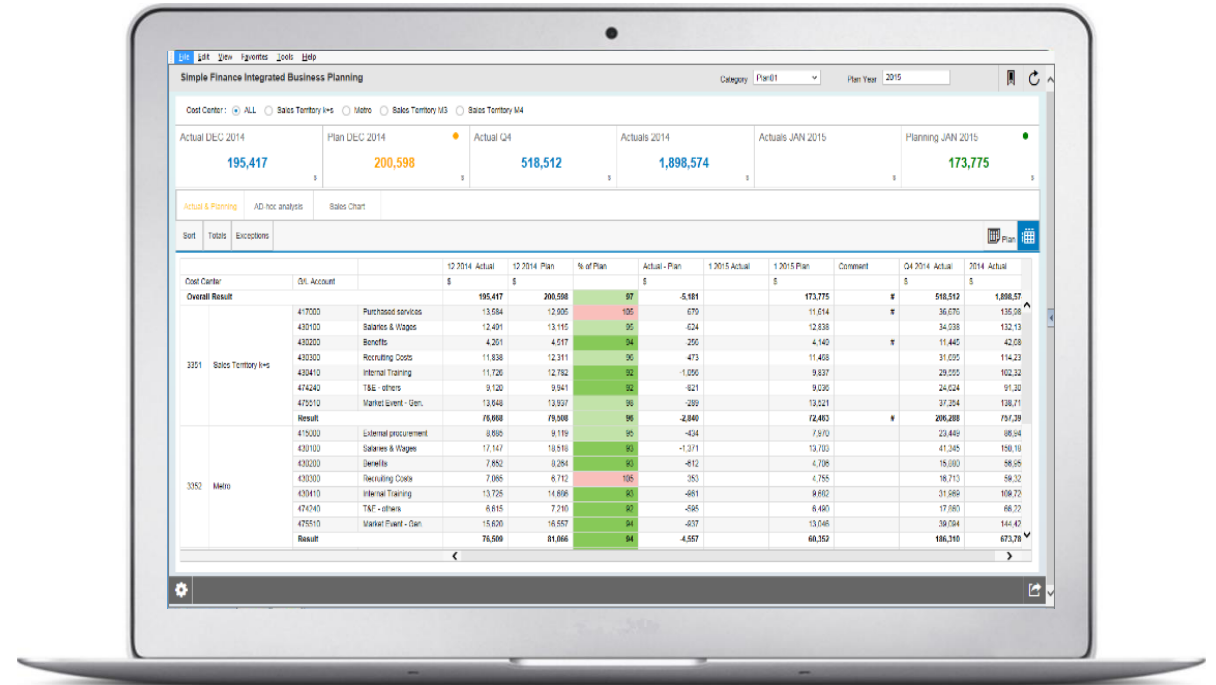
## Planned innovations

# SAP Business Planning and Consolidation, optimized for S/4HANA



# SAP BusinessObjects Planning and Consolidation, optimized for SAP S/4HANA

- Financial planning capabilities provided by SAP BusinessObjects Planning and Consolidation integrated into SAP S/4HANA
- Support for real-time actual-to-plan reporting and variance analysis
- Deployable on a single system
- Access in real time to master data and actuals (universal journal) from SAP S/4HANA
- Data replication for purposes of planning no longer required
- Single solution supporting the end-to-end planning and reporting process
- Integrated planning across the finance functions – planning in one area automatically updates plan values within other areas (eliminates silos)
- Delivered content designed to accelerate implementation



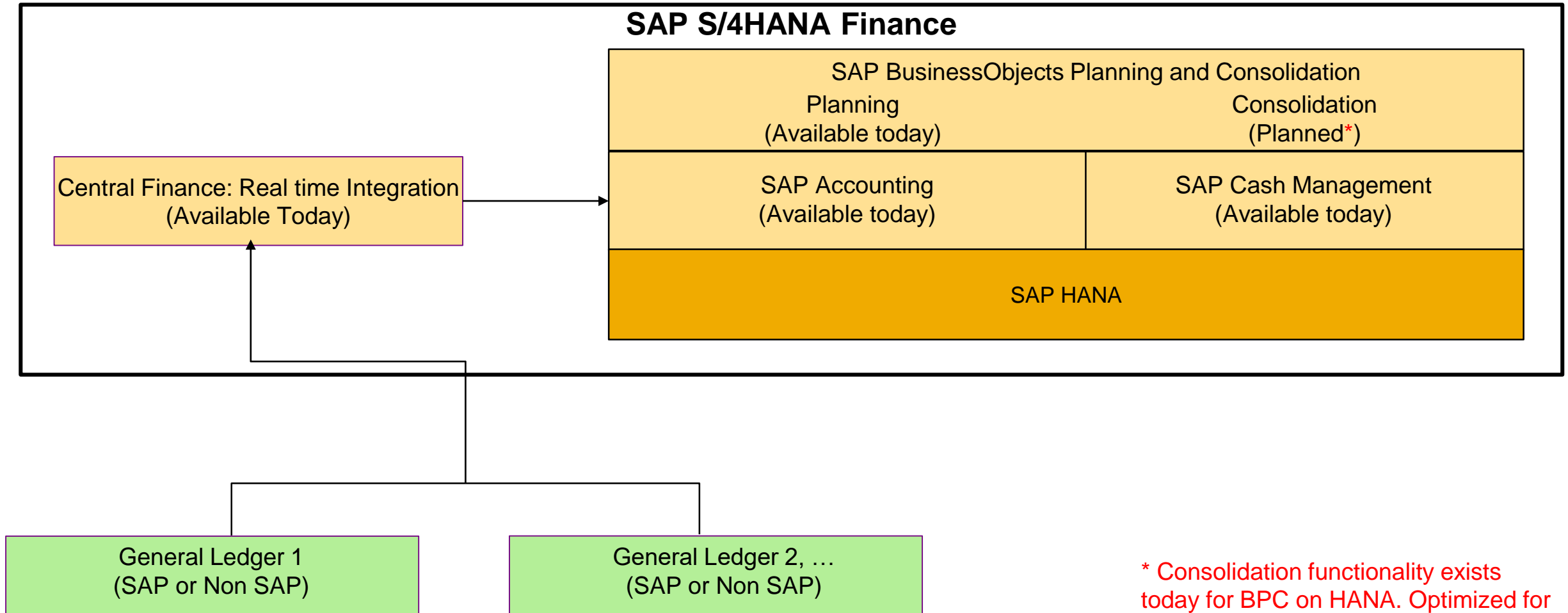
The screenshot displays the SAP BusinessObjects Planning and Consolidation interface. At the top, there are navigation tabs for 'Actuals', 'Plan', 'Variance', and 'Details'. Below this, a summary table shows key financial metrics for the year 2015. The main table below is a detailed financial statement with columns for 'Cost Center', 'GL Account', '12 2014 Actual', '12 2014 Plan', '% of Plan', 'Actual - Plan', '1 2015 Actual', '1 2015 Plan', 'Comment', 'Q4 2014 Actual', and '2014 Actual'. The table is organized into sections for 'Overall Result', 'Sales Territory Ives', and 'Metro'. The 'Overall Result' section shows a total of 195,417 for Actuals and 200,598 for Plan. The 'Sales Territory Ives' section shows a total of 518,512 for Actuals and 1,898,574 for Plan. The 'Metro' section shows a total of 173,775 for Actuals and 173,775 for Plan.

Cost Center	GL Account	12 2014 Actual	12 2014 Plan	% of Plan	Actual - Plan	1 2015 Actual	1 2015 Plan	Comment	Q4 2014 Actual	2014 Actual
Overall Result		195,417	200,598	97	-5,181		173,775		173,775	1,898,574
3301 Sales Territory Ives	417000 Purchased services	13,584	12,800	105	784		11,614		36,670	135,08
	430100 Salaries & Wages	12,491	13,115	95	624		12,838		34,538	132,13
	430200 Benefits	4,201	4,517	94	316		4,140		11,440	42,68
	430300 Recruiting Costs	11,838	12,311	96	473		11,408		31,690	114,23
	430400 Internal Training	11,726	12,762	92	1,036		9,837		29,550	102,32
	430500 T&E - others	9,120	9,941	92	821		9,026		24,424	91,30
	430600 Market Spend - Gen.	12,040	12,937	93	897		12,521		37,384	138,71
	Result	76,600	78,500	98	-1,900		72,403		208,208	797,39
3302 Metro	417000 External procurement	8,800	9,110	97	-310		7,910		23,449	88,14
	430100 Salaries & Wages	17,147	18,510	93	1,363		17,103		47,345	180,10
	430200 Benefits	7,882	8,284	95	402		7,708		18,080	68,56
	430300 Recruiting Costs	7,085	6,712	105	373		6,785		18,713	58,32
	430400 Internal Training	13,725	14,898	92	1,173		9,802		31,582	108,72
	430500 T&E - others	6,615	7,210	92	595		6,480		17,880	68,72
	430600 Market Spend - Gen.	15,630	16,557	94	927		15,045		39,094	144,42
	Result	76,500	81,866	94	5,366		60,352		188,310	673,26

Solution today

# SAP BPC Optimized for SAP S/4HANA

Integrated platform supporting end to end financial reporting and planning



\* Consolidation functionality exists today for BPC on HANA. Optimized for S/4HANA is a planned future release

# SAP BusinessObjects Planning and Consolidation, optimized for SAP S/4HANA

## Scope

- Enhancements in the area of simulation of cost allocations
- Activity price and activity consumption planning
- Workbook redesign
- Basic sales planning workbook
- Model extension tool (MET)
- Integration with SAP Integrated Business Planning for sales and operations

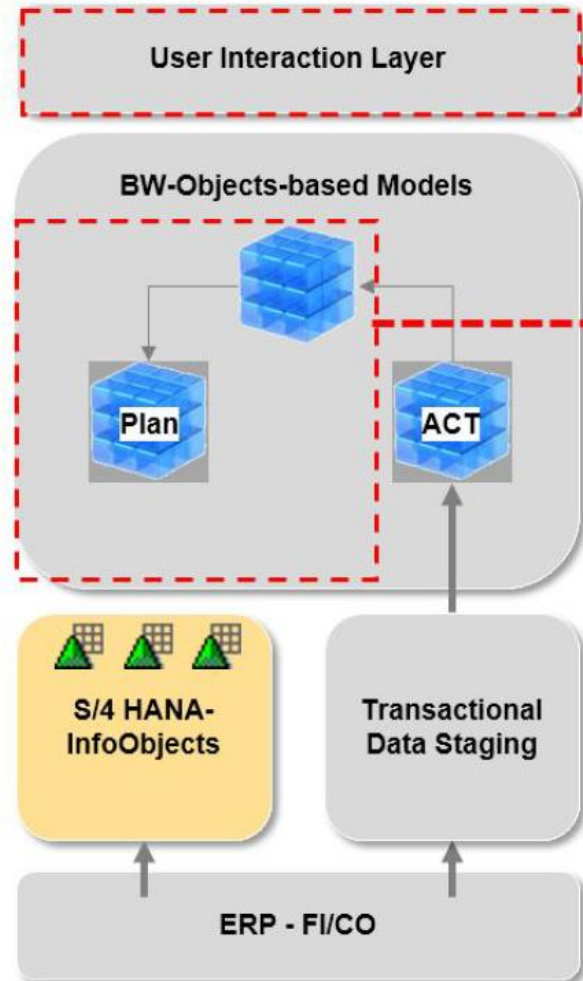
## Key benefits

- Enhanced support for simulating impact of changes on key drivers of allocated costs on receiving administrative and production cost centers. Now, the distribution mechanisms “ratio,” “consumed activity,” and “fixed amounts” can be included in the simulation.
- Easy to estimate the consumption of and resultant costs of consuming internal services during the planning process
- Planning workbooks will be redesigned to meet SAP Fiori UX style guides
- End-user-friendly, simple workbook to record expected sales prices and quantities by material and customer group
- To reduce setup time, MET automatically generates info objects and many other artifacts needed to get the planning solution running in a shorter time frame, including customer-specific planning dimensions
- Enhanced data quality and reduced effort in integrating sales and operational planning data into the overall profit-and-loss planning process

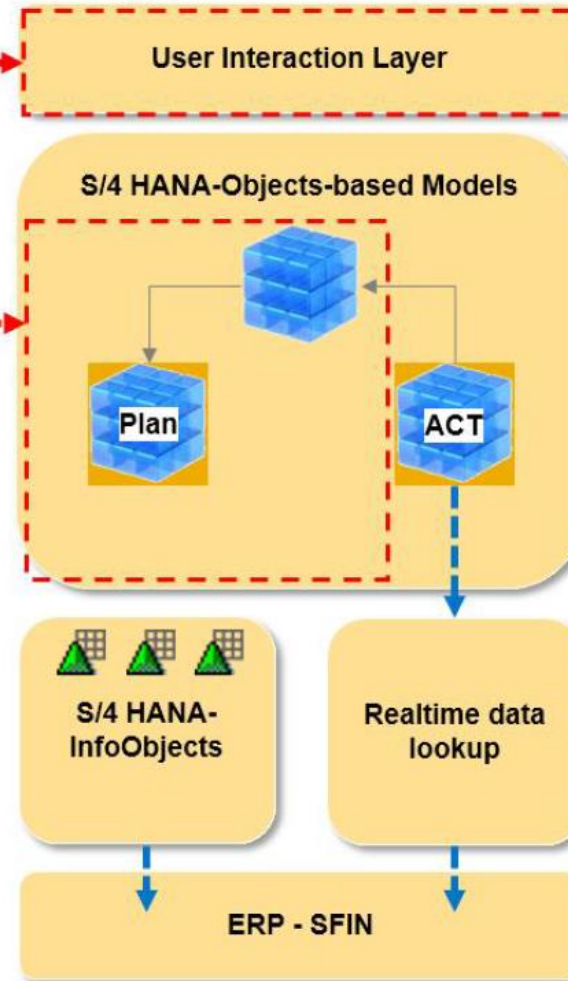
## Planned Innovations

# Start Today: Prepare SAP BPC Standalone for a Future Migration to SAP BPC, optimized for SAP S/4HANA Finance

BPC Standalone (Embedded Model)



BPC, optimized for SAP S/4HANA Finance



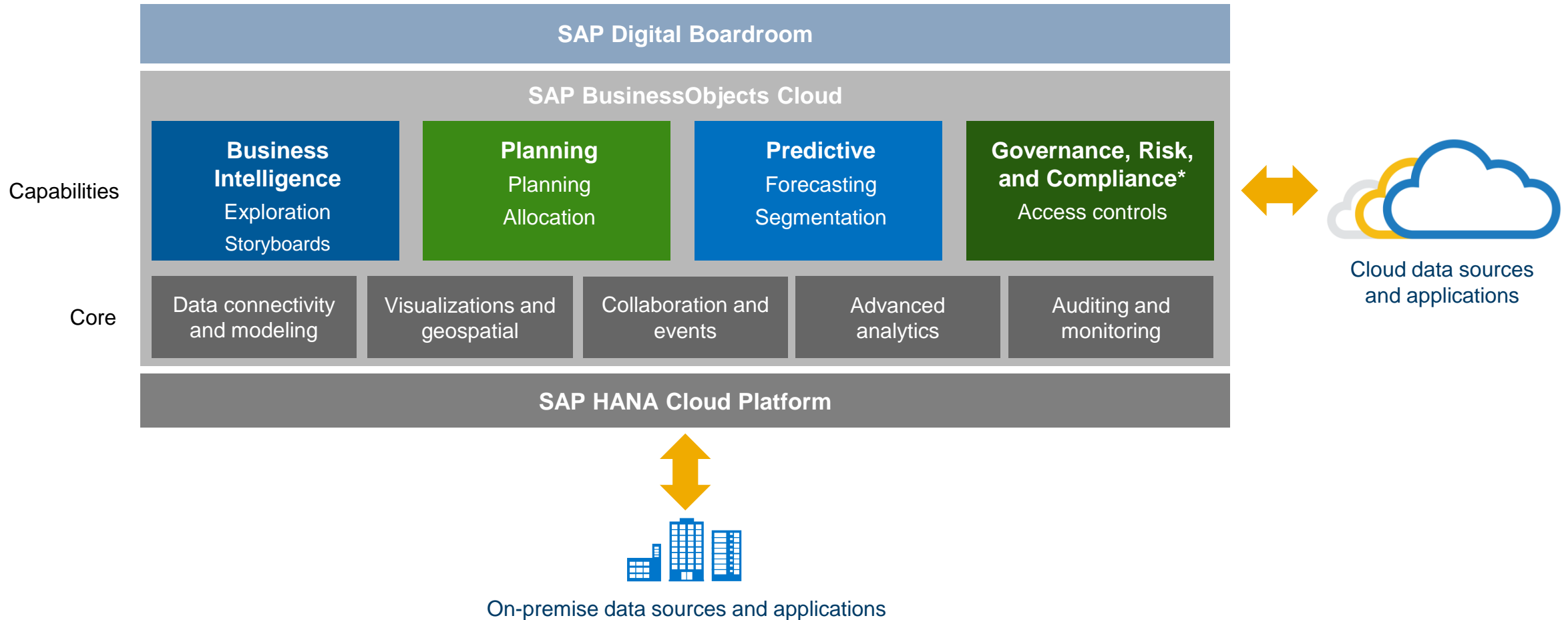
Reporting, Planning  
Functionality

Please refer to SAP Note  
2243472 for further details

# SAP BusinessObjects Cloud for planning



# SAP BusinessObjects Cloud Overview

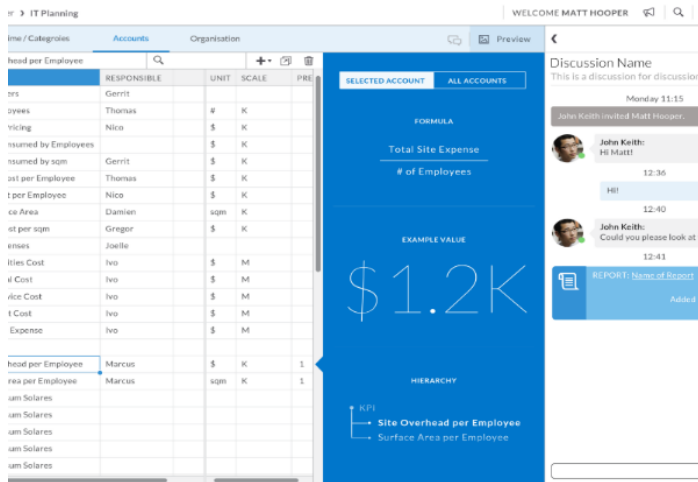


\* Planned

# SAP BusinessObjects Cloud Overview

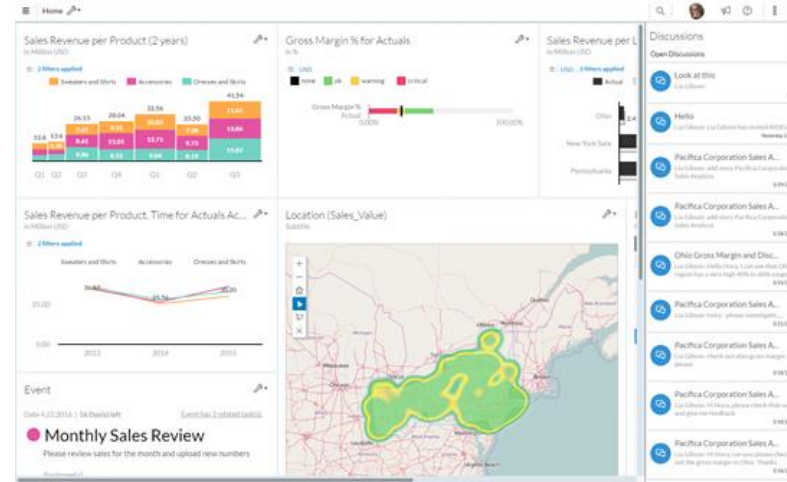
Today

## Simplify



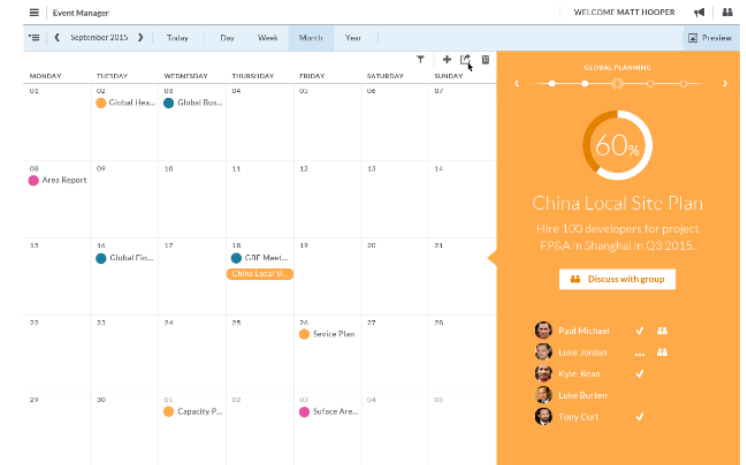
- Simply create and modify calculations and planning models and on the fly
- Take action anytime, anywhere on the desktop or on the go
- Align plans across Finance and business units with direct integration into SAP Business Planning and Consolidation

## Experience



- Analyze, plan and visualize in the same application
- Personalize your KPIs, dashboard, processes and stories
- Collaborate in-context of your plan and make faster decisions

## Trust



- Enjoy a new generation of planning in the cloud with a modern look and feel
- Plan and simulate at any level of detail, with any number of users, at any time
- Drive high performance planning and forecasting process with the SAP HANA Cloud Platform

# SAP BusinessObjects Cloud for planning

## Modeling

- Secure version
- Advanced currency conversion capabilities
  - Loading preconverted actuals
  - On-the-fly conversion during planning
- Extended multimodel linking capabilities

## Report/calculation engine

- Enhanced asymmetric reporting
- Plan on asymmetric report
- International Business Communication Standards (IBCS)-like table

## Process flows

- Enhanced input schedules
  - Set recurrence for input schedules
  - Monitoring of workflows/input schedules
  - Validations enabled

## Value driver tree

- Enhanced consumption flow
  - Add, remove, relink nodes
  - Group, ungroup nodes
- Consumption of calculated accounts

SAP Labs preview

The screenshot displays the SAP BusinessObjects Cloud planning interface. At the top, a navigation bar shows 'Input Task > ForecastAugust16'. Below this, a 'Data View' toolbar is visible. The main content area is titled 'Forecast August 16' and includes a message 'Please provide you data for August 2016'. An 'Approver' section shows 'Sam Smith'. A 'View' section on the right lists 'APJ (Sam Smith)', 'North America (Sam Smith)', and 'EMEA (Sam Smith)'. An 'Assignee(s)' section lists 'EMEA (You)' and 'North America'. The central table, 'Profit and Loss 2016 in mUSD', has columns for 'MEASURES', 'CATEGORY', 'VERSION', 'Actuals', 'Forecast', and 'MyPrivate August'. The table data is as follows:

MEASURES	CATEGORY	VERSION	Actuals	Forecast	MyPrivate August
			Actual June	Actual July	Forecast August
Profit and Loss 2016					
CHANNEL	PRODUCT				
Wholesale	▼ All Products		1260 M \$	1.940 M \$	2.860 M \$
	▶ Nonfoods		55		
	▶ Food		71		
Online	▼ All Products		160		
	▶ Nonfoods		94		
	▶ Food		66		
Retail	▼ All Products		367		
	▶ Nonfoods		142		
	▶ Food		225		

At the bottom, there are 'Send to Approver' and 'Decline' buttons. Overlaid on the bottom right are three 'Calculation Editor' windows. The first shows 'Name: Last FC', 'Type: Forecast', and 'Properties: L07'. The second shows 'Name: Current FC', 'Type: Forecast', and 'Properties: L07'. The third shows 'Name: Current FC', 'Type: Forecast', and 'Properties: L07'. The background table shows a detailed breakdown of financial data for August 2016, including 'Last FC', 'Current FC', and 'Current FC vs Last FC'.

This is the current state of planning and may be changed by SAP at any time.

# **SAP BusinessObjects Planning and Consolidation, version for the Microsoft Platform**



# SAP BusinessObjects Planning and Consolidation 10.1

Version for the Microsoft platform

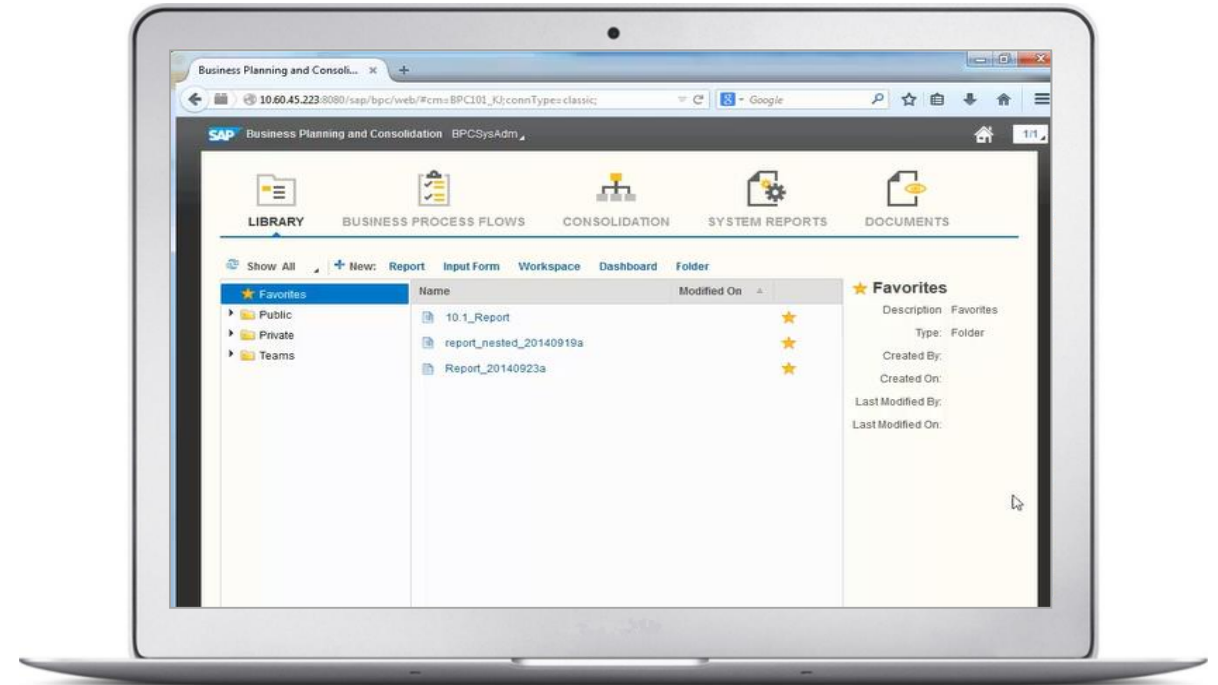
## Increased usability

- New HTML5 UI supporting easier navigation and cross-platform readiness
- New Web report and input form capabilities now available
- Advanced consolidation monitor

## Enhanced support for automated variance analysis

## Bidirectional integration with SAP BusinessObjects Cloud for planning

## Support for Chrome and Windows 10



Solution today

# SAP BusinessObjects Planning and Consolidation, version for Microsoft

## Scope

- Incremental consolidation
- Matrix consolidation
- Controls monitor
- Advanced business process flow
- Ability to open Excel reports from workspace
- Support for mobile app

## Key benefits

- Better performance and productivity to run consolidation when data changes, reducing time to close
- Easier way to run both legal consolidation and management consolidation by sharing same model and data
- Exception-based validation with greater control and visibility, enhancing accuracy
- More powerful and flexible process flow for planning and consolidation activities
- Greater productivity by allowing business users to group relevant reports together for frequent use under the same business context
- Broader adoption and increased engagement by leveraging mobile devices

## Planned innovations



**Thank you**